



UMC Utrecht

Entrustable Professional Activities for undergraduate medical education: lessons learned in Utrecht

Indra Posthumus MD, Lisanne Welink MD, Marijke
van Dijk MD PhD, Olle ten Cate PhD

University Medical Center Utrecht, the Netherlands



University Medical Center Utrecht

Disclosure statement

No conflict of interest reported



Some of the current work is being sponsored by an EU-FP7 funded project

Creative Commons License. This work is licensed under a Creative Commons Attribution-NonCommercial-ShareAlike 4.0 International License.
<http://creativecommons.org/licenses/by/4.0/>

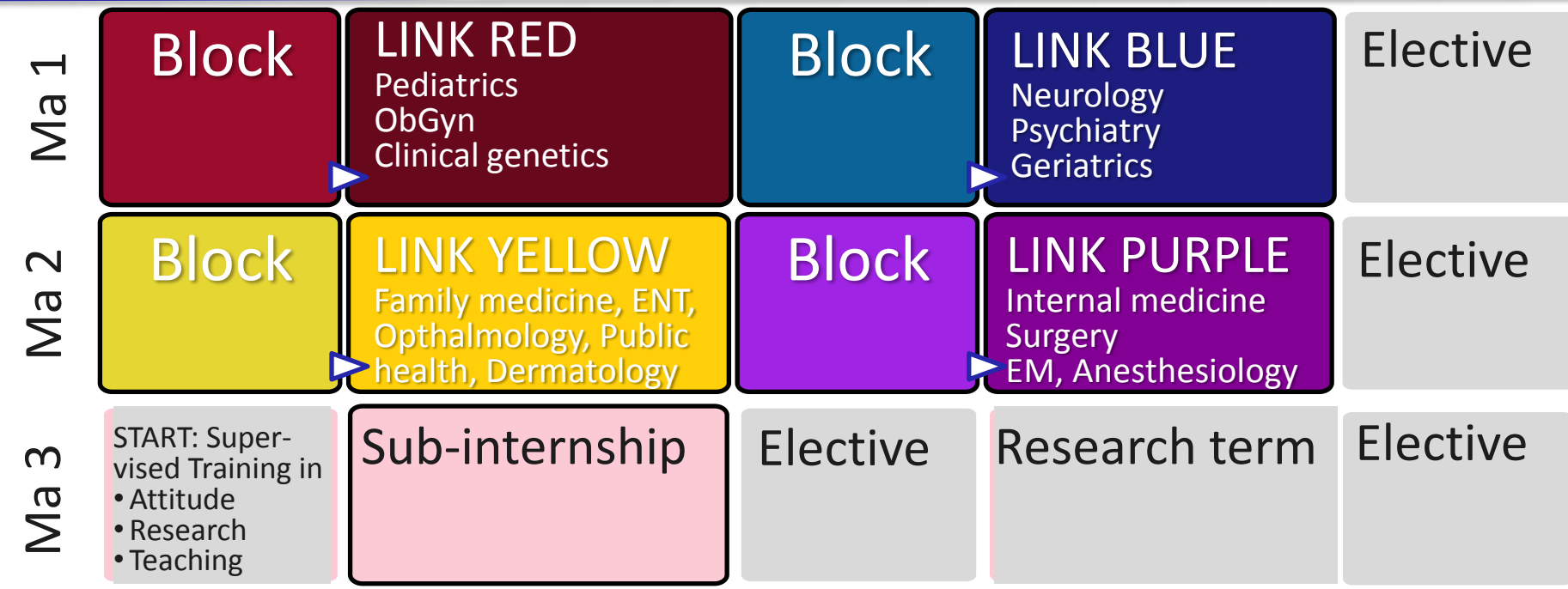
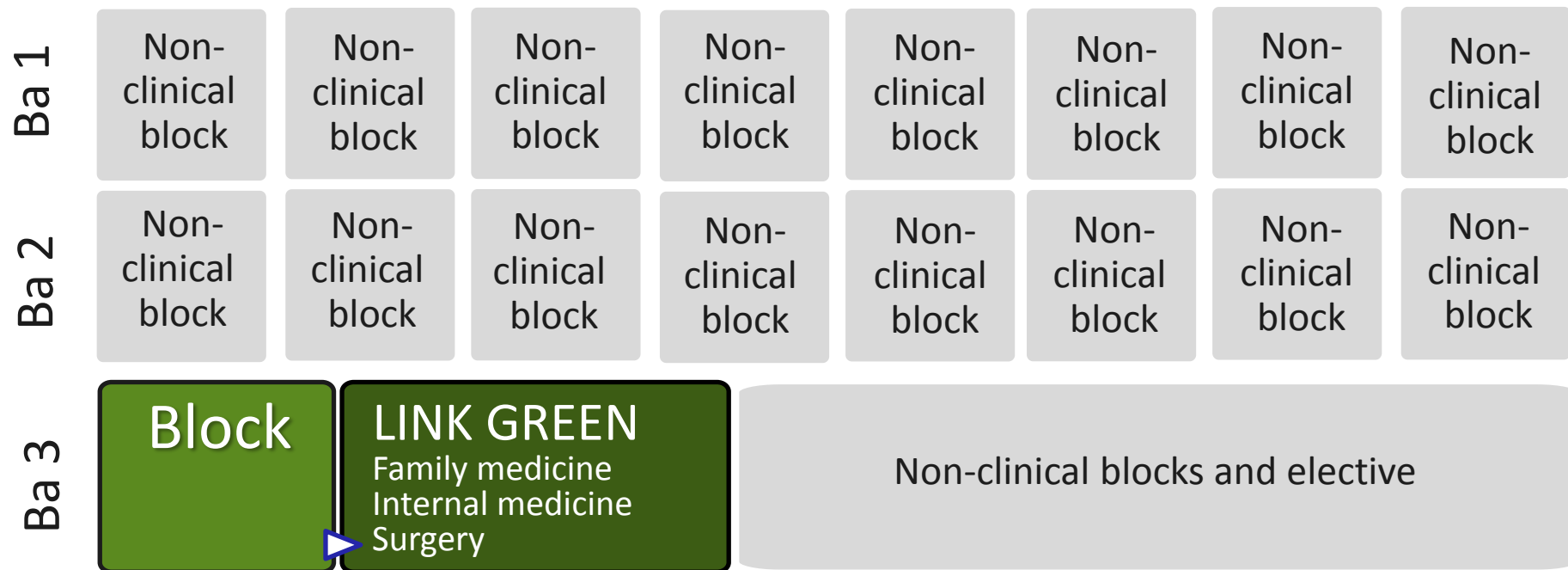


Overview

1. The Context
2. The New Utrecht Curricular Structure and Features
3. Details of the EPA framework
4. Translation to assessment practices

The Context

- 6 years → MD degree
- Proposal for new curriculum a.o.
 - Integrated clerkships of 12-week units
 - EPA-based philosophy



Five Core EPAs

1. The clinical consultation
 - **History**, physical examination, measuring vital signs, **creating a differential diagnosis**, ordering and interpreting diagnostic tests, designing a management plan, documentation
2. General medical procedures
 - **Preparing and executing** medical procedures including **communication** with the patient
3. Informing, advising & guiding patients and families
 - Discussing **diagnostic options**, **test results** or a **management plan** and **documentation**
4. Communicating & collaborating with colleagues
 - Writing **discharge summary**/letter, **oral patient hand-overs**, patient&research presentations, collaborating with health care workers and **contributing to interprofessional teams**
5. Extraordinary patient care
 - **Basic life support**, **establishing death**



EPA-Competency domain matrix

EPA	Medical expert	Communicator	Collaborator	Manager / leader	Health advocate	Scholar	Professional
1. The Clinical Consultation	⊙	⊙		⊙	•	⊙	⊙
2. General Medical Procedures	⊙	•		⊙			⊙
3. Informing, Advising and Guiding Patients and Families	•	⊙	•		•	•	⊙
4. Communicating and Collaborating with Colleagues	•		⊙	•	•	⊙	⊙
5. Extraordinary Patient Care	⊙	•	•	•			⊙

⊙ =essential, • =important

UNIT year	LINK GREEN BA 3	LINK RED MA 1	LINK BLUE MA 1	LINK YELLOW MA 2	LINK PURPLE MA 2	TRANSITIONAL YEAR MA 3
Disci- plines	Int.med.; surgery; fam.med	Pediatrics; obgyn; clin. genetics	Neurology; psychiatry; geriatrics	Fam.med; ENT; ophth; derm; pubH	Int.med.; surgery; anaesth.	All major disciplines as elective options
EPA 1	★	★	★	★	★	The Clinical Consultation
EPA 2	★	★		★	★	General Medical Procedures
EPA 3			★		★	Guiding, Informing and Advising Patients & Families
EPA 4			★		★	Communicating and Collaborating with Colleagues
EPA 5				★		Extraordinary Patient Care



Example of one integrated clerkship: “LINK Red”

Disciplines: Pediatrics, Obstetrics/Gynaecology, Clinical Genetics

Summative entrustment of specific EPAs required:

- 1.2 Gynaecology clinical consultation
- 1.3 Clinical consultation of pregnant woman
- 1.4 Clinical consultation of neonate and infant
- 1.5 Pediatric clinical consultation
- 1.6 Clinical genetics consultation

- 2.7 Insertion of urinary catheter
- 2.8 Speculum exam

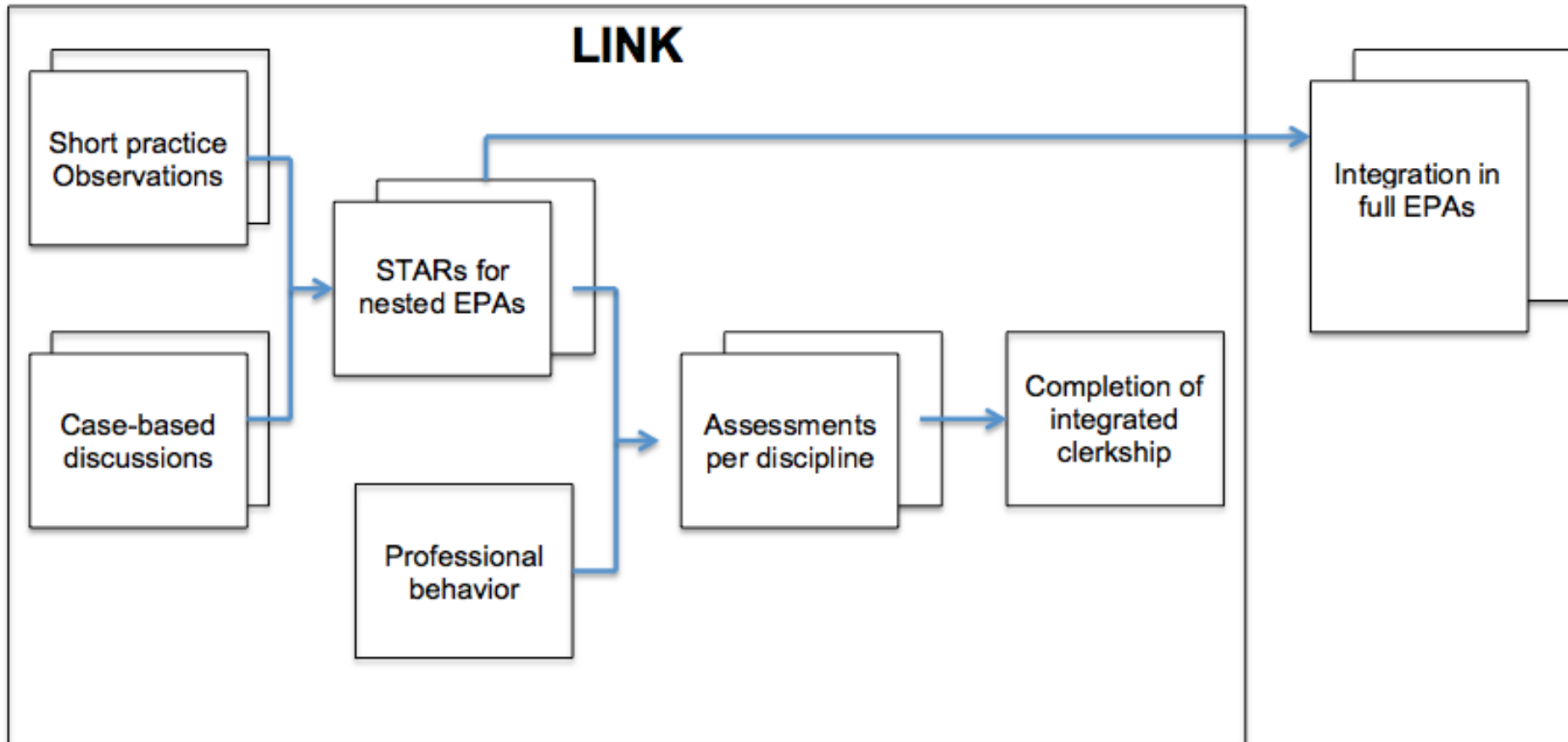
Summative entrustment of general EPAs optional (or in other clerkship):

- 3.1 Discussing diagnostic options and obtaining informed consent
- 3.2 Discussing test results, management plan

- 4.1 Documentation and presentation
- 4.2 Acting in interprofessional teams

- 5.1 Establishing death
- 5.2 Basic life support

Assessment and entrustment



Supervision scale for entrustment decisions

1. Permission to be present, not to enact the EPA.
2. **Direct supervision.** Supervisor present in the room. Pro-active supervision.
 - a. EPA conducted as a co-activity with supervisor
 - b. EPA conducted alone, with supervisor in the room; ready to step in as needed
3. **Indirect supervision.** Supervisor not in the room but in health care facility and quickly available for reactive/on-demand supervision.
 - a. All findings / decisions double checked
 - b. Key findings / decisions double checked
 - c. Findings / decisions discussed on student request
4. **Limited supervision.** Supervisor not present in health care facility.
 - a. Supervisor is available on call to come and provide supervision
 - b. Supervisor is not available but may provide feedback and monitoring in hindsight
5. Permission to supervise others in practice of this EPA.

Take home message

1. Framework developed and implemented
2. Limited experience
3. Evaluation planned

Questions?

Thank you for your attention!

I.Posthumus-2@umcutrecht.nl